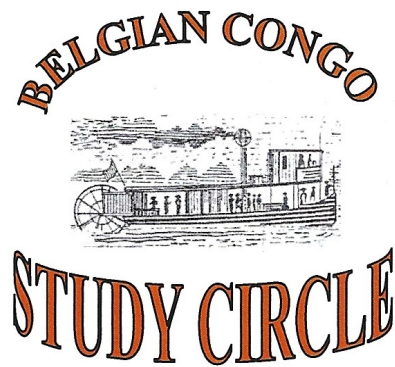


President

Thierry Frennet
Rue La rue, 17
1420 Braine L'alleud
Belgium

E-mail :

hydro-services@skynet.be



Honorary Secretary

Dr. Charles Lloyd
18 Linefield Road,
Carnoustie
Angus, DD7 6DP, Scotland

E-mail :

charleslloyd@blueyonder.co.uk

BULLETIN 165

May 2014

Bulletin Editor

Charles Hénuzet
Place St-Roch 30
5620 Florennes
Belgium

E-mail : henuzetcharles@hotmail.com

Librarian

Walter Deijnckens
Mariettalie 18
2930 Brasschaat
Belgium

E-mail : walter.deijnckens@telenet.be

CONTENTS		Page(s)
Receipts and Payments account – 2013		2
Minutes of the AGM, 5 April 2014		3 - 8
From the Editor		8
Membership News		9 - 10
My Favorite Cover	Les Cahiers du Congo Ch. Hénuzet	10
Obituary		11 - 12
The Gatti Expeditions to the Belgian Congo	- Regis Hoffman	13 - 21
Can you help Wants		21
How the “ LUKAFU” postmark came to be used in Elisabethville		
	(1910-1911) Les Cahiers du Congo Hénuzet - Hopperets	22 – 25
Auction 2014 (1) and results of 2013 (2)		Supplemental

The Study Circle website
www.belgian-congo-study-circle.be

Receipts and Payments (International) Account

For the year ending 28th February 2014 (Period 1st March 2013 – 28th February 2014)

2012- 2013
£ Sterling

2013-2014
£ Sterling

Receipts

Subscriptions received ¹	345.80	433.64
Commission on BCSC (UK) packet sales	28.61	0.00
Books and document sales	10.00	233.45 ²
Bank interest ³	1.49	0.00
Auction		
Purchases paid to the international account	15.00	40.00
Transferred from UK auction officer ⁴		2400.00
Expertisation fee paid into the international account	25.03	0.00
Total Receipts	445.73	3107.09

Payments

Bulletin & Auction List		
- UK & Rest of World – production & printing	202.89	167.26 ⁶
- UK & Rest of World – distribution	89.97	37.40 ⁶
Annual Meeting:		
- AGM, including refreshments	375.82	345.54
- Officers expenses (Hon Secretary & Hon Treasurer)	62.68 ⁷	330.26
Secretarial expenditure claimed	1.50	0.00
Carriage:	0.00	
transfer of library to Belgium		168.68
delivery of collection of Bulletins (1 to 132) to Hon Sec. ⁸		18.60
Insurance	120.89	120.84
Auction seller		1200.00
Total payments	853.75	2397.28

(Deficit) Surplus	(408.02)	709.81
Balance on hand at the end of the period	365.39	1075.20 ⁸

I certify that the "Receipts and Payments Account" is a complete account of all transactions for the year ending 28th February 2014

Charles H Lloyd
Honorary Treasurer

Notes

1. International account only. a) Subscriptions in arrears, b) 2014 subscriptions and c) subscriptions paid in advance are entered as one amount this year.
2. Includes £107.85 from sales in the period 2008-12, transferred to Hon. Treasurer by the former librarian.
3. The account opened in January 2013 is a TSB Society Treasurer's Account. It does not pay interest.
4. Was being held by the UK auctions officer, awaiting instructions. Transferred to international account in 2014.
5. Bulletins 163 & 164. Our former Editor, the late Stuart Smith, has updated the index. He informed the Hon. Treasurer that he would not be reclaiming his expenditure on the production of the index.
6. 2013 was an exceptional year. The Hon. Secretary / Hon. Treasurer had been in Brussels on business. Consequently, the claim was for marginal expenditure.
7. The Hon. Secretary was offered a collection of Bulletins free of charge. These were accepted.
8. Balance in the Belgian account = €1223.90. Balance in the USA account = US\$2123.20

Report & minutes of the AGM of the Belgian Congo Study Circle, held at the Hotel Erasmus on the 5th April 2014

The AGM opened at 09:30 with the President, Thierry Frennet, in the Chair.

Present:

Thierry Frennet, Ludo Achtens, Eric Bedout, Laurent Bierny, Charles Henuzet, Jaques Heytens, Walter Deijnckens, Emile Hoorens, Patrick Janssens, Thomas Lindekens, Philippe Lindekens, Charles Lloyd, Bruce Lockhart, Rudi Louis, Gerald Mariner, Patrick Maselis, Jude Murison, Marc Oblin, Charles Stockmans, Christian Van den Bossche, Bart Willekens, Yves Winand and Bimal Bhaskaran (guest).
(23 members were present)

Apologies for Absence:

Jean Pierre Flammand, Michel Hopperets, Hal Hoyte, Vincent Schouberechts, Leo Tavano, Luc van der Marken, Lucien Janssens, Filip Van Der Haegen and Marc Frevelhausen.

Minutes of the AGM held on 16th March 2013:

In accordance with accepted practice, the minutes that were presented at this AGM were the unconfirmed minutes of the 2013 AGM, as reported in Bulletin 163. The Hon. Secretary reminded those present that an error in the composition of the Expertisation Committee had been brought to his attention and the correct composition was printed in Bulletin 164. It was for this AGM to accept these minutes as a correct and full record of the 2013 AGM, subject to the correction of the composition of the Expertisation Committee. (i.e. Luc Vander Marcken should be listed as a *Consultant* and not a *Member*. Filip Van der Haegen is a *Member*.) He asked for any other comments.

Hearing none, the minutes were accepted.

Matters arising from the Minutes:

One member questioned the correction, as he considered that the change had been imposed. Another member recalled that the composition of the Expertisation Committee had been discussed at length last year and the composition agreed as being that in the unapproved minutes subject to the corrections. (n.b. The unapproved minutes were incorrect as noted above). Furthermore, he thought it was unnecessary to reopen this discussion. This was accepted

Reports from the Officers:

Presidents Report:

The President, Thierry Frennet, reported the deaths of two distinguished members, Ed Lavitt and Stuart Smith. Both had served the Study Circle well. He invited those present to show their respects by rising and observing a minute's silence.

He congratulated all members who had distinguished themselves at several philatelic exhibitions, noting that exhibits at Liège by ten members had been award prizes, as had others at Saint-Gilles and at Tournai. He remains convinced that by entering competitions and revealing the best of our collections to other philatelists, we can boost interest in Congo philately. He urged everyone to continue to participate in competitive exhibitions and at other philatelic events.

He wished those who intend to enter competitions at BRABANTPHIL every success and to be rewarded with good scores.

The Report was accepted

**Minutes of the Annual General Meeting
Saturday 05th April 2014 at 09:30**



From left to right:

R. Louis, Dr.M.Oblin, C.Stockmans, P.Maselis, B.Willekins, Y.Wynants, J.Heytens, B.Bhaskaran, P.Janssens, W.Deijnckens, L.Bierny, C.Hénuzet, B.Lockhart, C.Vandenbossche, E.Bedoret, J.Murison, Dr. C.Lloyd, P.Lindekens, T.Frennet, T.Lindekens, G.Marriner, L.Achten, E.Hoorens

Honorary Secretary:

The Honorary Secretary invited members to join him in thanking all of the officers of the Study Circle for the time, skill and care taken by them during the past year, which has ensured continuing success.

He was pleased to report that membership had increased (again) and now totals 140. For the first time we have members in Malta and Argentina. (By country:- Belgium 68; USA 23; UK 22; France 6; Germany 4; Australia, Denmark, Sweden & South Africa - 2 each; Netherlands, Poland, Portugal, Spain, Switzerland, Malta, Argentina & Zimbabwe - 1 each). We gained 11 new members but lost 2.

He supported the President's invitation to boost interest in Congo philately by competing at exhibitions. In addition, he suggested that by displaying at local philatelic societies we demonstrate to other collectors the great variety and fascinating nature of Congo philately.

In Bulletin 164, our Editor (Stuart Smith) had raised the question of the future direction of the Study Circle. Specifically, if the Bulletin is discontinued we would become The Belgian Congo Philatelic Society as a consequence. (Also, see the report for the Bulletin Editor.) The Hon. Secretary had looked through the archives and seen that the Study Circle had faced such a crisis in the past, but had survived and prospered. He was reassured by developments since that editorial had been published. He believes that we will continue as a Study Circle and achieve even greater success in the future.

He wanted to end on a positive note by congratulating Hal Hoyte who has been a member for 58 years! In all probability, he is our longest serving member. Membership records in early Bulletins are patchy and the Hon. Secretary would appreciate membership information regarding other senior members.

The report was accepted.

Honorary Treasurer:

Charles Lloyd, the Hon. Treasurer, believes that the Study Circle's finances are sound. As may be seen, the international receipts and payment account (i.e. the Pounds Sterling account) benefited from the transfer of a substantial amount of auction income that was being held in another depositary, pending the finalisation of payments to the Keach beneficiaries.

91% of our membership lives in three financial zones; in Eurozone countries, in the UK & in the USA. By operating (£, \$ & €) accounts in the UK, USA & Belgium, respectively, these members benefit from lower bank transaction charges for subscription and auction payments.

Foreign transaction charges are often disproportionate to the amount being sent. The financial officers have been concerned about the other 9% of members. This year, Ludo Achten created a PayPal account (belgiancongostudycircle@hotmail.com) into which payments can be made from everywhere for a modest charge. If this is used, members should ensure that the full amount due is received by the Study Circle.

Subscriptions for 2015 (due on 1st January 2015)

The Study Circle officers had agreed that from now, the subscription rate will be based on delivery of the Bulletin and Auction List by e-mail attachment which is to be the default method, though the postage of paper copies will continue, if requested. Most members are internet connected and distribution by e-mail minimises costs and ensures immediate delivery. Also, the default rates will be set for the cost to be about the same everywhere with the optional postal delivery cost set by the geographic variation in this.

The Hon. Treasurer's proposal was for the default rate to remain almost unchanged and to increase the optional (postal delivery) rate. The latter has to take increased postal charges into account. This was accepted.

These are:

UK	£10	(£15 for those receiving the Bulletin etc. by post)
Belgium	€12	(€12 for those receiving the Bulletin etc. by post)
Other European	€12	(€18 for those receiving the Bulletin etc. by post)
USA	\$18	(\$22 for those receiving the Bulletin etc. by post)
Rest of the World	£10	(£20 for those receiving the Bulletin etc. by post)

The report was accepted, as were the proposed 2015 subscription rates.

Auction Sales Officer :

Marc Oblin presented a verbal report on behalf of the Auction Sales Officer. There had been two auctions this year. The 400 lots offered had produced sales of €1988.24 which generated an income of €112.25 (as of 28th February 2014).

Commission is charged on all lots - 5% for the seller and 10% for the buyer. At some time in the past, the commission had been waived on the sale of material submitted by the widows of deceased members.

Although well-meaning, it was unclear why it was introduced. The practice will cease. The Study Circle provides a service by disposing of assets in a trusted way and at a charge lower than alternative auctions.

The report was accepted.

Secretary of the Expertisation Committee :

28 certificates were given of which 10 were free to members. (Charles Henuzet reminded members that they are entitled to two free expertisations per year and urged them to make use of this service.) While income is not of primary importance, expertisation created a net income of €31.88 this year.

The report was accepted.

Librarian :

Walter Deijnckens informed the meeting that 5 books had been borrowed and 8 copies of Heim – Keach had been sold. (*Secretary's comment: The profit on these sales is €29.16*). Walter has removed duplicate copies of books from the library and intends to offer these for sale in the auction. This action was approved.

The report was accepted.

Packet Secretaries (UK & Belgium) :

Exchange packets are circulated in the UK & Belgium. (These are two separate activities, with packets circulated only in one or the other of these countries.) No packets had been circulated in 2013 due to the lack of sufficient material. The Honorary Secretary reminded the meeting that at the AGM last year we agreed not to end the packets because the submission of material is cyclical and periods of low supply are expected. Material unsuited for sale in the auction might be sold through the packet. Marc Oblin has replaced Charles Henuzet as Secretary for the Belgian Packet.

Webmaster :

Bruce Lockhart has updated and modified the website, prioritising particular areas. He faces limitations due to the software used to create the site. It is old software. (There is a general problem : As manufacturers develop new more advanced software this creates obsolescence in existing software.)

Adding Bulletins to the site was suggested. This would be convenient for members and perhaps produce new members. This was discussed. If the Bulletin is freely available on the website, would there be an incentive to join? Perhaps the old Bulletins, copies that most members do not have, could be added? Maybe Bulletins from the last 5 or 7 years might not be added. If they are added could they be password protected? (*Although the following point was not raised, it had been by Stuart Smith last year and should be included here: Stuart did not object to selected bulletin articles appearing on the website, but the news and information pages should not appear. They often contain personal information which is subject to data protection laws and disclosures might inadvertently present a security threat.*) The issue was left in the hands of Bruce.

The report was accepted.

Bulletin Editor & the future direction of the Bulletin

As the meeting was aware, our Editor Stuart Smith died on the 25th February, having resigned from the post on the 16th February. For this reason, the Honorary Secretary presented a report.

The future of the Bulletin emerged as an important issue during the year. This had concerned Stuart. For several years the number of suitable research articles being received had decreased and as a consequence the target of four bulletins per year could not be sustained. Only two Bulletins (163 & 164) were published last year. Stuart would not include material that added little or nothing to improve the understanding of Congo philately, merely to achieve that target number. Unless a solution to the supply problem could be found, he thought it might be better to cease publication, with the Bulletin's reputation left intact. Without that research element published in a Bulletin, the scope of the Belgian Congo Study Circle would be altered significantly and our study circle would default to the status of a philatelic society.

Stuart was offered a solution which he accepted gratefully and publication of the Bulletin will continue. The editor of *Les Cahiers du Congo* offered to supply articles published in *Cahiers*, articles which Patrick Maselis offered to translate into English. Stuart described this (to your Hon. Secretary) as a very generous offer which would give the wider membership (whose French language skills might be limited) access to these high quality articles. Articles written in English are still greatly encouraged and (in a two-way street of knowledge) these would be translated into French.

In effect, the Bulletin is to be reborn! It will be in two parts. The first will contain items of information and news, just as we are used to in copies from the past. The second will contain research articles under the heading of *Notes from the Congo*.

Charles Lloyd observed that an old adage held true; a crisis could also become a business opportunity. There will be a significant landmark improvement. In the future the Bulletin will be produced in English and French editions. He believed members would welcome this.

A considerable work-load is entailed in the production of a high quality periodical such as the *Bulletin*. Stuart Smith recognised that it had become too much for one person. Today, it is appropriate to form an editorial board led by an editor-in-chief. It would be the wish of all members that the Bulletin resumes its publication every three months as soon as possible. Because, at present, *Les Cahiers du Congo* will be the primary source for articles, its editor Charles Henuzet should become Editor of the Bulletin with Les Cahiers production team the Bulletin Editorial Board. Charles Henuzet indicated that he would accept and hearing no other comment at the meeting, the matter was decided. Charles Henuzet circulated mock-up of the “reborn” Bulletin. The identity of the Bulletin is retained with elements of *Les Cahiers du Congo* added. This met with approval.

The final matter to be decided was to identify a member who would assist with the news and information section. On hearing no offers, the Hon. Secretary agreed to do this. (All news items, change of address and matters of interest etc. should be e-mailed to him).

Officers 2014-5

All officer holders agreed to remain in office for 2014-5. This was accepted *nem. con.* by the meeting. Charles Henuzet was proposed for the post of Bulletin Editor, left vacant after the resignation of Stuart Smith. This was accepted. Charles Lloyd offered to distribute the Bulletin and auction lists to members in the UK and Rest of the World (a job done by Stuart Smith). This was accepted. Mark Oblin is now the Belgian Packet Secretary.

These were accepted *nem. con.*

President	<i>Thierry Frennet</i>
Honorary Secretary	<i>Charles Lloyd</i>
Regional Sec. – Belgium	<i>Patrick Maselis</i>
Regional Sec. – USA	<i>David Schaubroeck</i>
Regional Sec. – UK + R of W	<i>Charles Lloyd</i>
Honorary Treasurer	<i>Charles Lloyd</i>
Financial Officer	<i>Ludo Achten</i>
Regional Treasurer – Belgium	<i>Ludo Achten</i>
Regional Treasurer – USA	<i>David Schaubroeck</i>
Regional Treasurer – UK and R of W	<i>Charles Lloyd</i>
Bulletin Editor	<i>Charles Henuzet (new appointment)</i>
Bulletin distribution – Belgium	<i>Patrick Maselis</i>
Bulletin distribution – USA	<i>Ken Goss</i>
Bulletin distribution – UK and R of W	<i>Charles Lloyd (new appointment)</i>
Web Master	<i>Bruce Lockhart</i>
Auction Secretaries	<i>Thierry Frennet, Marc Oblin, Charles Stockmans</i>
Auction Finance Officer	<i>Ludo Achten</i>
Librarian	<i>Walter Deijnckens</i>
Packet Sec. – Belgium	<i>Marc Oblin (new appointment)</i>
Packet Sec. – UK	<i>John Kelland</i>
Expertisation committee:	
- Secretary and Chair	<i>Charles Henuzet</i>
- Members	<i>Thierry Frennet, Marc Oblin, Filip Vander Haegen</i>
- Consultants	<i>Léo Tavano, Michel Hopperets, Luc Vander Marcken, Jean-pierre Flamand.</i>

A.O.B. (any other business):

There was general support for updating Heim & Keach. There have been a significant number of new discoveries: Postmarks used outside the period given in Heim & Keach and the discovery of previously unknown postmarks. Also, some members thought that the measurement of angles and how these relate to the columns in the tables could be explained more clearly.

There was a proposal for the 2015 AGM to be held in London. This will be investigated. The date has been set, provisionally, for the 28th March.

The business part of the AGM closed at 11:00

Displays at the AGM

After the AGM business had been completed, members who were present were treated to the following displays. For now, they are listed but a full report will be printed in the next issue of the Bulletin.

Patrick MASELIS	The 1886 and 1887 Issue
Thomas LINDEKENS	Provisional censorship in Congo during WW2
Gerald MARRINER	Katanga 1960-1963
Emile HOORENS	Postcard 1 Fr
Philippe LINDEKENS	My favorite covers about Mols issues 1895-1932
Bart WILLEKINS	Cancellations that have not been seen before
Charles HENUZET	File copies of the Prince's issue

The meeting closed at 16:30

From the Editor



If you have a change of address or mail or other information to report, please send this to our Honorary Secretary Ch.Lloyd (Email: charleslloyd@blueyonder.co.uk)

We always need good articles for the bulletin, and if you can bring your help it will always be welcome. You can send your articles by email to the bulletin editor and in the form for the "word" document text and scans of the pieces in "jpeg". Short notes which are contributions less than one (Bulletin) printed page in length are always welcome.

Member's individual advertisements

In the past, "want lists" of stamps or other philatelic material that member's want to acquire have been published in the Bulletin. (The transactions will be between individuals.) The intention is to help individuals enhance their collections. This feature will continue.

Sales of stamps, covers, etc. takes place in our auctions or packets.

Membership and Study Circle News

New Members

We extend a warm welcome to the following recently joined members and trust they will enjoy and benefit from their association with us.

Germany **Udo Elste** Karlstr. 46
29525 Uelzen
Email m.ehrig@gmx.de

Udo describes himself as not yet an advanced collector (Collecting interests: Belgian Congo in general, Ruanda Urundi, Katanga & South Kasai, Congo 1960-4).

Belgium **Prof Dr Marc Van Ranst** Perkamentlaan 7
2830 Blaasveld
Email: vanranstmarc@gmail.com

Jean Buckinx rue de la douix 10
4130 Esneux
+32 4 3802789
Email: none at present

UK **Tony Belfield FRPS** 9 Brodbury Croft
Solihull
B91 1HQ
England
Email: tony@belfield.eclipse.co.uk

Tony is a specialist collector whose main interest is German East Africa / Tanganyika. He is particularly interested in Kigoma & Tabora, World War 1 and censorship. He is also interested in closely related material (e.g. Postal stationery campaign view cards).

Changes of Address

Australia **Tony Walker** PO Box 58
Carrington
NSW
Australia 2294
Email: alwj1955@bigpond.net.au

Denmark **Niels-Peter Overgaard** Enghedsvei 6A (2H)
2920 Charlottenlung
Email: n.p.overgaard@gmail.com

Poland **Aleksander Pliszka** skrytka 52
UP Izabelin ul. Tetmajera 1,
05-080 Izabelin
Email: olek55@wp.pl

Zimbabwe **Joan Soriano** Flat 37,
Masonic Homes
Belvedere
Harare
Email: none at present
165/9

Competition successes

At exhibition held at, St-Gilles February 2013 and Tournay October 2013, 3 members of the study circle participated, receiving between them 7 medals of which 3 were Gold, 1 Large Vermeil, 2 Large Silver and 1 Silver.

The Awards

UNIONPHIL 2013

Lindekens Philippe	Etude des relations postales du Congo Belge, Mols 1895-1916	91% Gold
Lindekens Thomas	La série Mols Croix-rouge de 1918, du CongoBelge et Ruanda-Urundi	76% Large Silver
Deijnckens Walter	Postzegels,postburelen en afstempelingen van de onafhankelijke Republiek Ruanda 1962-2012	70% Silver

TOURNAI 2013

Lindekens Philippe	Congo Belge 1886-1914	90% Gold
Lindekens Philippe	Congo Belge cachets gommés 1886-1960	90% Gold
Lindekens Thomas	Entiers postaux types palmiers 1912 Congo Belge Ruanda-Urundi	85% Large Vermeil
LindekensThomas	Série palmier Congo Belge, Rwanda et Burundi	76% Large Silver

My Favorite Cover

Postal stationery postcard n° 37

Les Cahiers du Congo CH. HENUZET

LAEKEN
26 XII 1911



PAQUEBOT
LEOPOLDVILLE
Cancellation
La Rochelle - Palice

== PAQUEBOT

A postal stationery postcard, carried on board the SS LEOPOLDVILLE, cancelled with the hand-stamp "PAQUEBOT LEOPOLDVILLE" and addressed to Laeken where it was received on 26 December 1911. The postcard was offloaded at the port of La Rochelle- Pallice where the mark "PAQUEBOT" was applied to indicate re-entry into the postal service as an item deposited from a ship. Also, a French postmark was applied to cancel the stamp in a postal way. The carrier sent the card this way, transported by train between La Rochelle and Brussels, to gain 1 or 2 days earlier delivery (compared to continued carriage by sea).

Have you a Favorite Cover ? If Yes Sent to the bulletin Editor your piece

Stuart S Smith 1932 – 2014

President:	1989-1991
Bulletin Editor:	1977-1980 & 2003-2014
Secretary:	1997-2004 & 2009-12
Treasurer:	1997-2011



After a long illness borne with great dignity, Stuart Smith passed away peacefully on the 25th February, at home in Curbar, Derbyshire and surrounded by his family. For Stuart who achieved much in so many ways, it is a difficult task to decide which details to include in this appreciation!

Everyone has described him as a decent and kind gentleman who was quite unassuming. However, if he had come to a particular conclusion based on evidence he would hold firm (a characteristic of the Yorkshireman that he was). Always, tricky matters were handled with care and tact. Not only, did he give much time and effort to the Study Circle as an organisation, individual members were helped in every way. His attention to detail and adherence to a policy of evidence-based conclusions in Bulletin articles came from his scientific training combined with experience in business.

An interest in science at school took him into chemistry and the dye industry in Yorkshire, where textile manufacturing was a staple industry. Starting from the laboratory bench, he rose through his knowledge and work ethic. He was greatly respected at all levels in the industry. In 1974 he launched a company that manufactures textile testing and laboratory equipment. Under his leadership, that company grew to become a market leader by the time he retired in 1995. That year the Society of Dyers and Colourists elected Stuart as its President in recognition of his “outstanding” contribution to its objectives (education, advancing science & technology). News of his death produced this comment: “The textile world lost a real giant this week: Stuart Smith”.

As a young man Stuart was conscripted into the British Army for National (military) Service. Stuart recalled that, on discovering he was a scientist the Army posted him to the Royal Army Ordnance Corps for bomb disposal. Although he did not follow the reasoning for this, he found the work interesting – there was a lot to do, travelling throughout the country and good camaraderie.

Stuart married Joan in 1958 and they were blessed with two daughters, Sallie and Jane. Family life was most important to him and great happiness and enjoyment arrived in the form of four grandchildren. Not only was Joan his partner in life, but also in business. The success of their company resulted from the complementary skills they contributed. Retirement and moving to Curbar gave Stuart the opportunity to indulge in another relaxing pastime, gardening. Over two decades he created a wonderful garden set in one of the most beautiful parts of England.

Like many of us, Stuart began a life-long passion for philately as a schoolboy with an album given as a present by a close relative. An occasional treat of a 6d (3¢) “schoolboy packet” of stamps revealed their fascinating diversity, but it was the letters from his Auntie Josie in Africa that converted him into a Belgian Congo collector. By his late teens he was seeking out rarities for his Congo collection. Like many, he admired the Mols issue and took on the challenge of specialising. He shared his success in identifying plate combinations with fellow members through his series of twelve articles that were published in the Bulletin between 2002 and 2012. (He had intended to present these together in a book, *Identification of the Mols Plate Combinations*, after that.) This study was crowned with a Gold at the 94th Philatelic Congress of Great Britain (Perth 2012) for his entry, *Belgian Congo – Plates of the 15 Centimes Mols 1896 – 1922*. This recognition gave him particular pleasure, though he was quite self-effacing when the topic was raised.

Stuart's devotion to the Mols issues did not preclude an interest in other philatelic topics. An outstanding collection of the *Postal History of Derbyshire*, focused on the town of Bakewell, was built in parallel. On this, he was acknowledged as an authority and known to possess "some very nice pieces" including some of its earliest recorded postmarks.

Stuart's association with the Study Circle began in 1973, when he joined and for the following 40 years was a cornerstone in its management. The list of offices he held is a testament to this. In each of these he served us enthusiastically and ably. In his time as Editor, he continued to improve the Bulletin, introducing both colour and electronic distribution in 2005. He considered the Bulletin the equal of other specialist society journals and his entry at *Espania 06 – Exposition Mundial de Filatelia* was rewarded with a Large Silver. He retired from the Editorship just a week before his death, but not before he had made arrangements to ensure that the Bulletin will continue at the high standard he set.

He will be missed by us, as a friend, as a philatelist with a font of knowledge and as a cement holding the Study Circle together. It was a privilege to have known him. Our sympathies are with Joan, Sallie, Jane and Stuart's grandchildren.



Edwin (Ed) M Lavitt 1920 – 2013

President: 1997-1999

Bulletin Editor: 1990-2001

US Bulletin Distributer: 1990-2008

US Regional Secretary: 1997-2002

Ed was born at the small Connecticut town of Rockville in 1920. In 1941, he graduated from the University of Massachusetts with a degree suited to joining the family farming business. Soon after that, the USA was drawn into World War II and Ed proudly enlisted in the US Army Air Corps to become a pilot. He saw much action in Europe for which he was awarded the Distinguished Flying Cross, the Air Medal (both with oak leaf clusters) and the Légion d'Honneur. After demobilisation he resumed his intended career by becoming a farming and commodity broker, with the assumption that one day he would take the helm of the family business.

However, in the early 1950's Ed decided to make a radical change and in 1953 qualified as a lawyer. He found this chosen profession rewarding because he would go on to practice successfully in court from then until he retired in 1982. For the last 20 years of his legal career he was a state magistrate.

Leisure time was divided between participating in individual sports (golf, horse riding), gardening and in particular cultivating orchids. As a married man of 56 years, he was (of course) devoted to his wife, children and grandchildren. Following the progress of offspring is pleasurable way to spend time, time that Ed gave freely.

However, we know Ed the philatelist! He followed in his father's footsteps, inheriting a passion for collecting and building a specialised collection.

Ed joined the Study Circle in 1982 and (as you have read already) contributed much to the Study Circle. He was a Mols specialist who struck-up an enduring friendship with Ray Keach. He enjoyed Ray's company and master classes on plating, spending days with Ray, accumulating and preserving knowledge. After Ray's death, Ed offered to be an intermediary for members who were trying to assemble plated sheets by providing a service previously given by Ray for members to interact and create more complete plating collections. He is survived by a son, a daughter, and two grandchildren to whom our sympathies are extended. He will be missed, particularly by those members in the USA with whom he was in contact the most.

The Gatti Expeditions to the Belgian Congo

Regis Hoffman

Attilio Gatti was an Italian cavalry officer who developed a love for African exploration. Beginning in 1924, he led a series of thirteen expeditions to the *Dark Continent*. According to promotional literature of one of the expeditions, these experiences “*made Attilio Gatti today one of the greatest living African explorers, a leading authority on the topography and wild life – of Africa.*”

In 1930, he moved to the United States, and began preparations for further expeditions. His historical and philatelic importance is multi-faceted:

- 1) Gatti used the mail as a method of promotion. Promotional postcards and letters were mailed from the expeditions. These were sent as commercial advertisements rather than souvenirs for philatelists, so it is difficult to assess how many of these items survive.
- 2) He employed special expedition cancels and sometimes cachets on the expedition’s mail.
- 3) He was a master of self-promotion, with numerous advertising tie-ins with corporations.
- 4) Souvenir booklets were produced for at least two of the expeditions with tie-ins to the sponsoring corporations.
- 5) He was a prolific author of books and magazine articles about his expeditions.

Mail from the 9th through 13th expeditions is known. Expeditions 9 and 10 explored the Belgian Congo, and are discussed in this article. Special covers from the expedition are shown, together with other historical memorabilia to give a flavor of the man that commanded these excursions into Africa.

Attilio Gatti

Limited information about Command Gatti is available. He was an Italian cavalry officer and developed a love for Africa. He frequently posed for publicity photographs (Figure 1).



Figure 1. 1937

publicity photograph of Attilio Gatti.

He spoke Italian, French, Arabic and a variety of African dialects, but no English. He traveled to New York in 1930 where he met and married his wife, Miss Ellen Waddill. They settled in the United States, living in the New England state of Vermont.

The 9th Expedition

Very little is known about this expedition. Unfortunately, even though Gatti wrote books about his travels, they are more chronicles of African adventure rather than historical records of the expedition.

The only cover I have seen from this expedition is shown in Figure 2.



Figure 2. Cover from the Gatti Zoological Expedition.

It bears the printed return address of the “Gatti Zoological Expedition – Stanleyville.” It was mailed from Leopoldville, Belgian Congo to England on March 24, 1936.

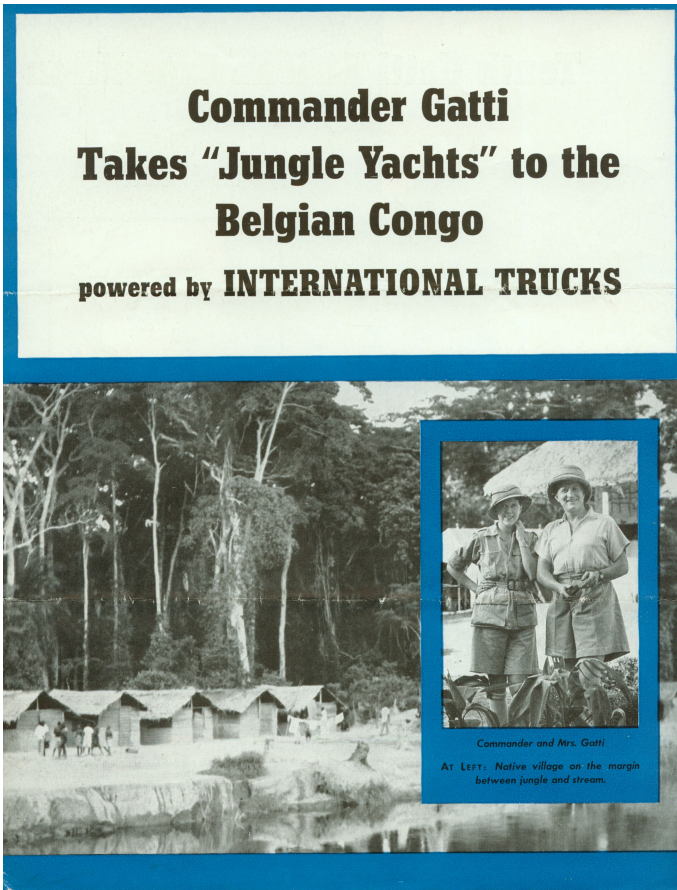
The 10th Expedition

This expedition spanned the years 1938 and 1939. Most of the information about this expedition is found in promotional pamphlets (Figure 3) . The International Harvester Company of the United States, who supplied the specialized trucks used in the expedition, produced it. These booklets were sent as promotional literature to International Harvesters’ network of dealers and are occasionally found listed on eBay. My copy also has a letter from International Harvester that was included with the booklet. It reads in part:

“We are pleased to send you a copy of the pamphlet describing the equipment of the Tenth Gatti African Expedition and its objectives. Our colored page in the magazine shows photographic cuts of the attractive interiors of the trailers. The booklet, which was prepared some months ago, shows preliminary sketches as made by Count de Sakhnoffsky, the designer. The five trucks which power the expedition are of International Harvester manufacture, and the two elaborate trailers were built by Fleetwheels Trailers, Bristol, Pennsylvania. As we have indicated, International Harvesters’ part in the project was to furnish the automotive power which, as Commander Gatti knows, will be a most vital element in the success of his venture into the Congo.”

The pamphlet is filled with expedition photographs and descriptive text, but omits the precise expedition itinerary.

Figure 3 Promotional Pamphlet for the 10th Expedition.



For example, the introduction in the booklet indicates that:

“After long preparation, the Tenth Gatti Expedition is ready to sail from New York for eighteen months of adventure in the African jungle... At Brussels, where the official sponsorship of the Belgian Government will reach its crest in a ceremonial send-off, more equipment and expert personnel will join them to go aboard Belgian steamers for the long journey to the Congo.”

From Brussels, equipment left via Antwerp toward Matadi, Belgian Congo (the port of debarkation). There are no covers known by the author from either the New York departure or the Brussels send-off. This is surprising, as a number of covers from the expedition itself are known.

The expedition was supported in part by the Belgian government, the University of Johannesburg and the Royal Zoological Societies of Rome and Antwerp.

According to a brochure, the expedition “has commissions from various sources for the capture of rare and little-known animals. It will make explorations into great areas still known only as ‘zones of mystery. Two promotional booklets are known from the expedition; in addition, publicity photographs were produced and used in newspaper and magazine articles. Figure 4 is a publicity photograph highlighting Commander Gatti in one of the expedition’s trucks.

**Publicity photograph of Commander Gatti in an expedition truck.
Note the “10th Gatti Expedition” label on the truck door.**

Figure 4



The postcard in Figure 5 is intriguing, as I believe it is from a member of the expedition. The card, which is addressed to Philadelphia (United States), is signed “Charlie” and endorsed “10th Gatti Expedition” in manuscript. Mentioned in one of the pamphlets is an expedition mechanic, Charlie Whitskey, whose hometown was Philadelphia. I believe he sent the card.

The card reads in part “Was on board boat 56 days + was damn glad to get off.” Perhaps this describes the trip from New York to Matadi.

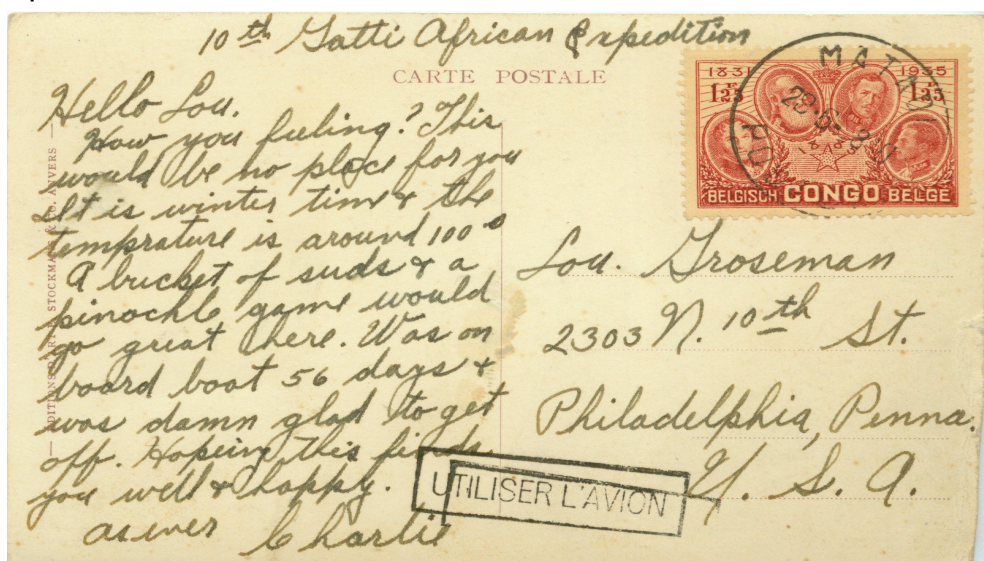


Figure 5. Card from member of the 10th Expedition (see manuscript indication at top)

A more common type of expedition mail is shown in Figure 6. It is a colorfully franked (although under-franked as postage due was assessed) commercial cover from the expedition to the United States. It bears the expedition cachet and circular date stamp of the “Mission Gatti” (see Figure 7).

Some covers were also autographed by Gatti; normally his signature appears following the last word in the cachet (Figure 8).

Both “Mission Gatti – Belgian Congo” and “Mission Gatti – Ruanda Urundi” circular date stamps are known. Most times they are dated several days before any postal cancel, and were probably applied to a stack of expedition covers before mailing.



Figure 6. Commercial cover from the 10th Expedition to the United States with special “Mission Gatti” cancel and expedition cachet.

Figure 7. Cachet and circular date stamp used by the expedition.

Certified Sent from the Base Camp
of the Tenth Gatti African Expedition
in the Equitorial Forest



Figure 8. Cover with cachet and autograph of Attilio Gatti (located after the word "Forest" in the expedition cachet).



In addition to exploration of the Belgian Congo, the expedition also traveled throughout Ruanda Urundi. For this portion of the expedition, a circular date stamp reading "Mission Gatti – Ruanda Urundi" was used (Figure 9).

Figure 9. Expedition cover bearing a "Mission Gatti – Ruanda Urundi" circular date stamp



Some covers are used commercially, others are less so, and perhaps were used as souvenirs (Figure 10 and Figure 11). These typically bear a single, low-value stamp, have the return address of a company located in the United States, and have no other cancels. These may have been sent to the United States under separate cover, and then distributed by the companies as publicity.

Figure 10. Souvenir cover with return address of Popular Photography magazine.

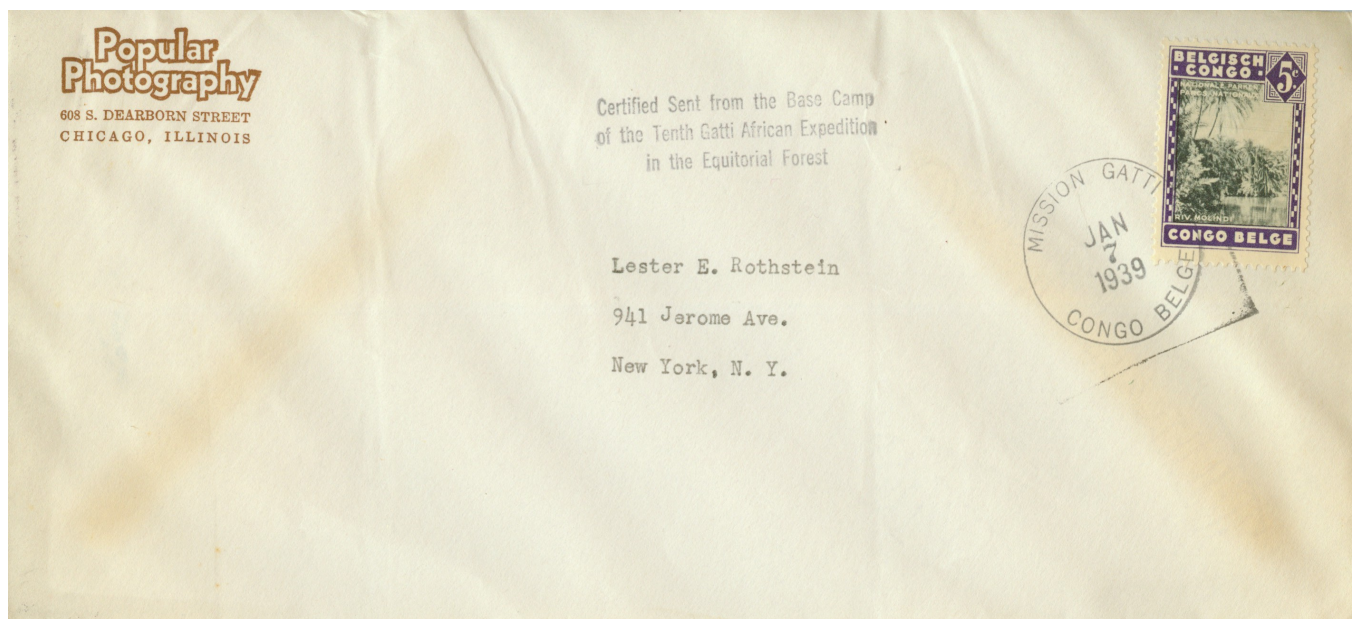
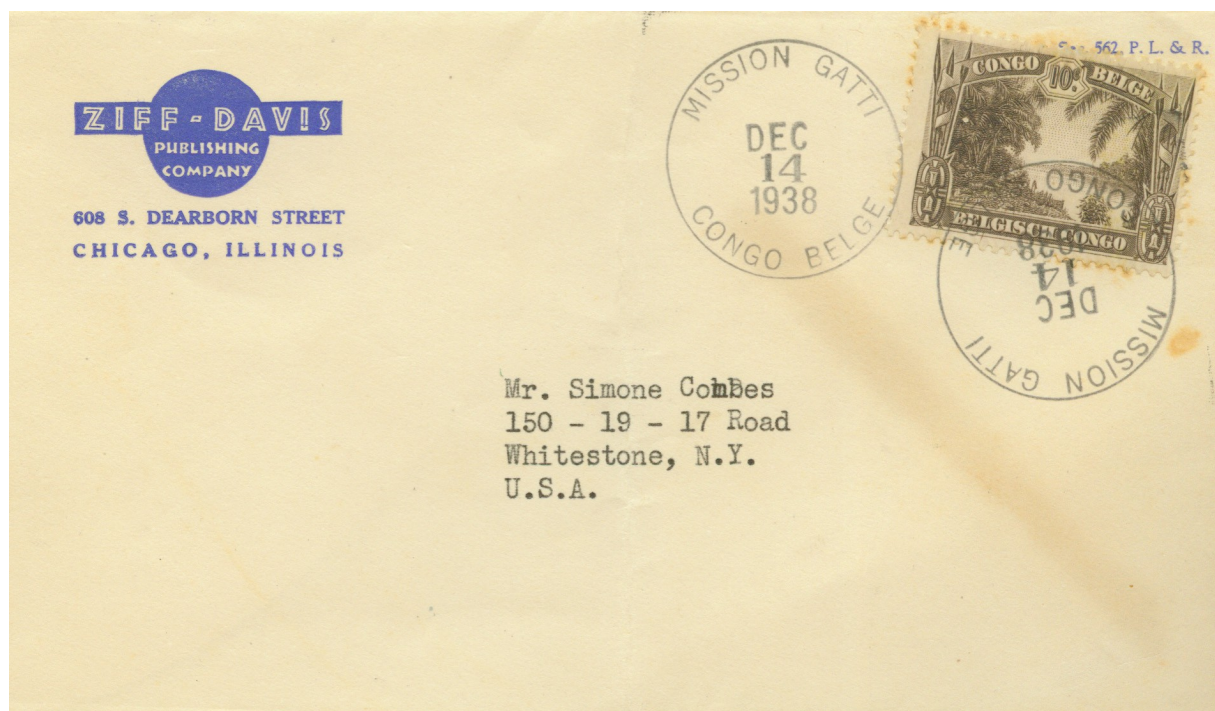


Figure 11. Souvenir cover with return address of Ziff-Davis hobbyist magazine publishers.



Recorded Uses

The table below summarizes the Gatti covers in the author’s collection, together with a few entries from recent items on eBay (the Internet auction site). This provides some evidence of the expedition itinerary; surprisingly for all that Commander Gatti wrote, the exact dates of the expedition are not recorded and must be deduced. Few covers bear evidence of passing through the postal system; these are indicated in the table via a city name in the “Cancel” column.

All bear the expedition circular date stamp, but few also have the expedition cachet (recorded in the “Cachet” column).

Note that covers from the Ruanda Urundi portion of the expedition are decidedly scarcer than the Belgian Congo portion.

Belgian Congo

Date	Cancel	Destination	Cachet?
14 December 1938	Stanleyville	USA	
14 December 1938		USA	
14 December 1938		USA	Yes
14 December 1938		USA	
14 December 1938		USA	(seen on eBay)
7 January 1939		USA	
7 January 1939		USA	
7 January 1939		USA	
7 January 1939	?	USA	Yes
7 January 1939		USA	Yes (seen on eBay)
7 January 1939		USA	(seen on eBay)
7 January 1939	Aba	USA	Yes (seen on eBay)
20 April 1939	Stanleyville	USA	Yes
10 May 1939		USA	
28 May 1939	Stanleyville	USA	

Ruanda Urundi

Date	Cancel	Destination	Cachet?
20? August 1939		USA	
20? August 1939		USA (four total)	
20? August 1939			Yes
20? August 1939			Yes
30 August 1939	Usumbura	USA	Yes

Additional Gatti expedition postal history has been seen on eBay, but unfortunately I was the underbidder.

Advertisements

Advertising also played a role in Gatti’s expeditions. Figure 12 is an advertisement for Hamilton watches. It mentions the 10th Expedition and pictures an Okwapi (*sic*) discovered by Gatti.(We recognise that Okwapi as written in the article is a misspelling. It should be Okapi.)

Figure 12. Advertisement for Hamilton watches publicizing their connection with Gatti's 10th Expedition.

Gatti again chooses Hamilton

**FOR TIMING RADIO COMMUNICATIONS
BETWEEN JUNGLE AND WORLD OUTSIDE**



"Following Stanley's Trail by Trailer."
Two luxurious, completely equipped trailers will go with Gatti into the interior, following the trail of the famous Stanley. (Right) Gatti, his Hamilton on his wrist, with "Toto," one of a new race of Okwapi discovered by Gatti.



COMMANDER ATTILIO GATTI, famous jungle explorer leaving New York this month on his 10th Expedition, hopes to penetrate into the depths of the Belgian Congo where neither white man nor native has ever gone before. Cut off completely from civilization, he will yet communicate by short wave with the entire world—*trusting to the Hamiltons carried by both himself and his wife for the perfect timing necessary to establish radio station contact.*

Gatti's faith in Hamilton accuracy—built up through several previous expeditions—is in keeping with that of a long list of famous explorers and scientists who have chosen Hamilton where dependable and accurate time-keeping was vitally necessary to success.

The same fine Hamilton performance may be yours in a variety of models, ranging from \$37.50 to \$5000. No Hamilton has fewer than 17 jewels. None is cased in less than precious metal. Write for illustrated folder. Hamilton Watch Co., 882 Columbia Avenue, Lancaster, Pennsylvania.

* * *

(Left to Right)

CONSTANCE. 17 jewels. 14K gold-filled case. Raised numeral dial. With silk cord (shown), \$47.50
SIDNEY. 17 jewels. 10K gold-filled case, natural yellow only. With applied gold numeral dial... \$40
COLE. 17 jewels. 10K gold-filled case, natural yellow only. Black enamel numerals... \$42.50



HAMILTON
the Watch of Railroad Accuracy

"Mention the Geographic—It identifies you."

Subsequent Expeditions

Gatti's 10th expedition was the final one to the Belgian Congo, but he organized several additional African expeditions and all had similar promotional mail and materials.

The 11th Expedition was more popularly known as the Gatti Hallicrafters Expedition, as it was sponsored by the Hallicrafters Company (a manufacturer of radio equipment).

It explored the East African nations of Kenya, Uganda and Tanganyika between 1948 and 1949.

The 12th Expedition was to South Africa during 1952.

The 13th Expedition returned to Kenya, East Africa between 1956-1957.

Conclusions : Gatti expedition memorabilia and postal history is a fascinating collecting area, with more discoveries to be made. Any member with further information or examples of items not shown here are asked to contact me at rgmmhoffman@comcast.net



Wants

Jean-pierre Thiry on email : jeanpierre.thiry@gmail.com

Looking for any documentation or writings concerning inland navigation, river or lake, to the Belgian Congo at the beginning of the last century.

X-X-X-X-X-X-X-X-X-X-X-X-X-X-X-X

Philippe Lindekens want list for plating Mols

This is Philippe's want list for plating Mols – He will pay 30% of the COB value for all Mols except for Prince Congo Belge typo issue, for which he will pay between 30 to 50% of COB value [according to quality of the stamp (cancellation)]. He will accept stamps with faults (e.g. bad perforations, a thin, a tear, etc.) at 10% of COB value. (COB = Official Belgian Catalogue)

Philippe Lindekens - lindekens.bogaerts@skynet.be

Princes Congo Belge typo issue:

5c Prince typo : sheet positions: 3 – 24 – 31 – 45

10c Prince typo : sheet position: 24

25c Prince typo : sheet positions : 5 – 6 – 8 – 14 – 22 – 27 – 28 – 32 – 36 – 49

40c Prince typo : sheet positions : 1 - 4 – 5 – 6 – 13 – 18 – 20 – 23 – 25 – 33 – 37 – 40 – 41 – 47 – 50

50c Prince typo : sheet positions: 1 -12 – 14 – 18 – 27 – 28 – 30 – 38 – 42 – 43 – 45

1F Prince typo : sheet position: 19

3.50F Prince typo : sheet positions: 2 – 5 – 15 – 24

Other Mols issues :

1fr. bilingual 1910 carmine - plate II₁+A₃ sheet position: 40

1fr. bilingual 1915 olive - plate II₂+A₅ sheet positions: 31-34

25c. bilingual 1910 blue - plate II₂+A₄ sheet positions: 42-43-44

5fr. bilingual 1915 orange – plate II₁+A₃ sheet position: 15

5c. bilingual 1915 green – plate V₁+E₁ sheet positions: 22-30-42

5c. bilingual 1915 green – plate VI+F sheet positions: 7-10-15-25-36-43-49-50

Philippe adds “Don't hesitate to send me your want lists and with other platers, I will try to complete your reconstructed sheets. We could perhaps restart the Gudenkauf & Keach “exchange” for platers?”

Thomas Lindekens want list nice cancellations on the 40c Prince Congo Belge Typo overprint other than Boma, Kuesi, Uvira, Lukafu, Inongo, Sakania, Libenge (While the price is not mentioned, a reasonable inference is that it is the same as that offered by Philippe). Contact with Thomas can be made through Philippe Lindekens - lindekens.bogaerts@skynet.be

How the “LUKAFU” postmark came to be used in Elisabethville (1910-1911)

Les Cahiers du Congo
Charles Henuzet and Michel Hopperets

Postal services in the Congo Free State developed from post offices located close to the mouth of the Congo river. On 1 January 1886, for example, when the first postal service was established, only 3 post offices were operating in Banana, Boma and Vivi, all of which were situated close to the Atlantic coast (fig.1)

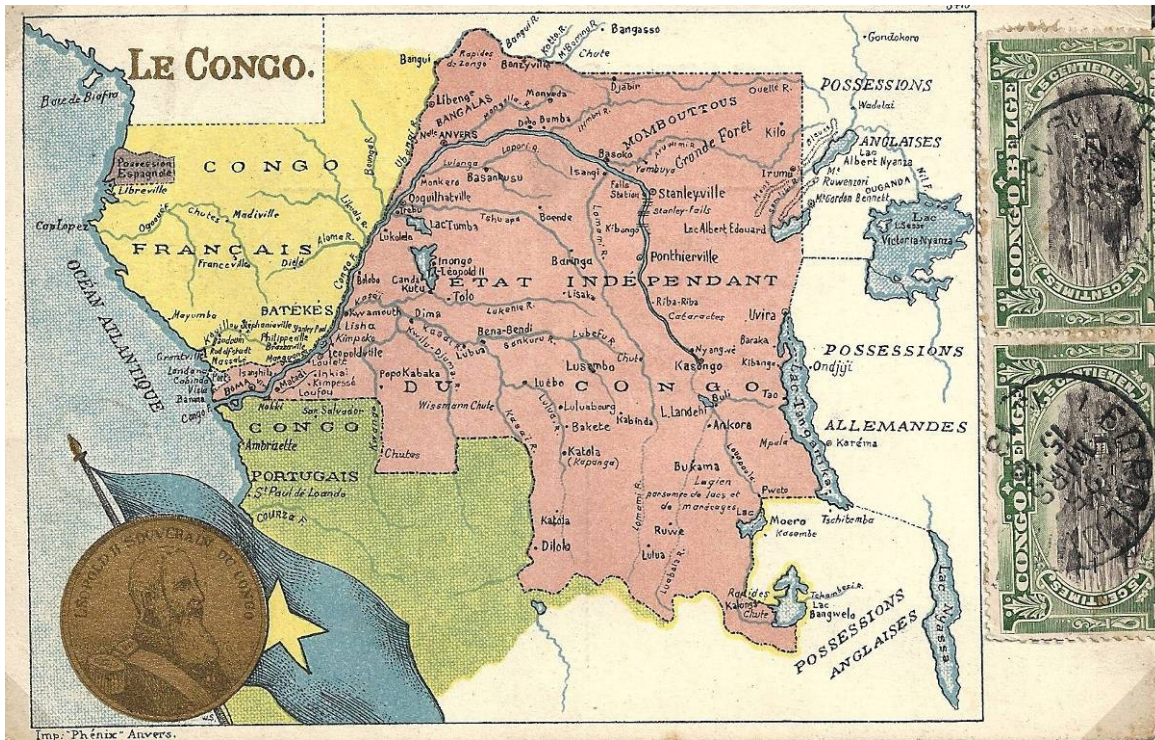


figure 1

Later, as colonisation and the presence of Europeans gradually increased, other post offices were opened further inland. Postal services developed mainly along the Congo river and its tributaries. In order to meet demand, new post offices were opened, while others were closed or moved.



figure 2

The province of Katanga (Fig. 2) was situated a long way from the Atlantic coast in this vast country (which is 80 times the size of Belgium) and was relatively isolated from navigable waterways. When colonisation first began, few foreigners were present in this region, which meant that it was not necessary to set up a post office.

A first office was opened in Albertville on 1 July 1896. This office was closed by order of 22 July 1896 and transferred to me Toa; the name me Toa was changed to Toa by Decree of April 1, 1898. Then, it took the start of the 20th century to see the creation of a new post office in the province of Katanga, namely Pweto where a sous-perception was created by Decree of July 8, 1902. This office was specially designed to serve postal relations in the territories administered by the Special Committee of Katanga.

Subsequently, the South of Katanga grew at an extraordinary pace, in particular due to the discovery of its mineral wealth and the construction of a line of railway between Kambove and Sakania. In parallel, the openings of new post offices followed at a steady pace.

The first post offices to be opened in the south were in Lukafu and Musofi on 1 July 1908, followed by Sakania (1 March 1910), Elisabethville (1 April 1910), Kambove and Kipaila (1 October 1910).

This development came so quickly that the new post offices did not always have the necessary equipment to handle the mail, with which they were entrusted. This was how a Musofi postmark came to be used in Sakania in 1910, until the appropriate handstamp was received.

Similarly, we will look at how a Lukafu postmark was used in Elisabethville.

As mentioned above, a sub-post office was opened in Lukafu on 1 July 1908. It was provided with two 23 mm diameter handstamps, which are listed as 1.1 and 1.2 in the book by Heim and Keach.

What makes these two handstamps special is that only the last 2 two digits of the year are shown (see Fig. 3), while virtually all 23 mm handstamps show all 4 digits of the year, the first 2 of which (18 or 19) are fixed characters!



figure 3

As a result, because the 2 digits of the year were movable characters, it is only possible to identify the postmarks by measuring the angle formed by the vertical line of the L and the first vertical line of the U. The book by Heim and Keach mentions a 130° angle for handstamp 1.1 and a 131° angle for handstamp 1.2. Such a small difference does not enable us to reliably identify the postmarks by measuring this angle.

Fortunately, another method makes it fairly easy to identify the type of postmark: the width of the letter K. The K in handstamp 1.1 is 2.0 mm wide, while that in handstamp 1.2 is 1.8 mm wide. This measurement is therefore far more useful than the angle (Fig. 4 and Fig.5)

This measurement is therefore far more useful than the angle (Fig. 4 and Fig.5)

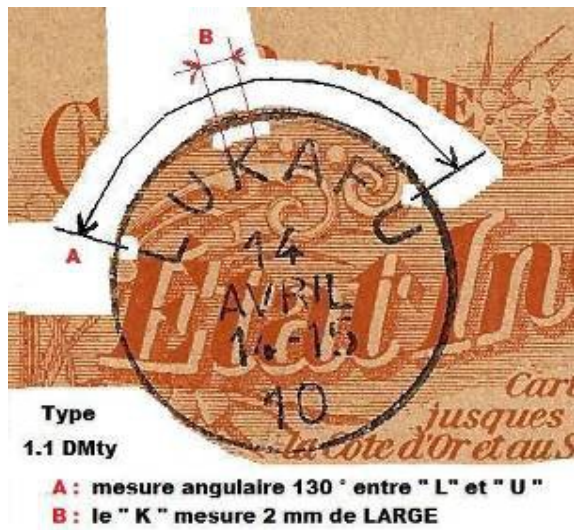


figure 4

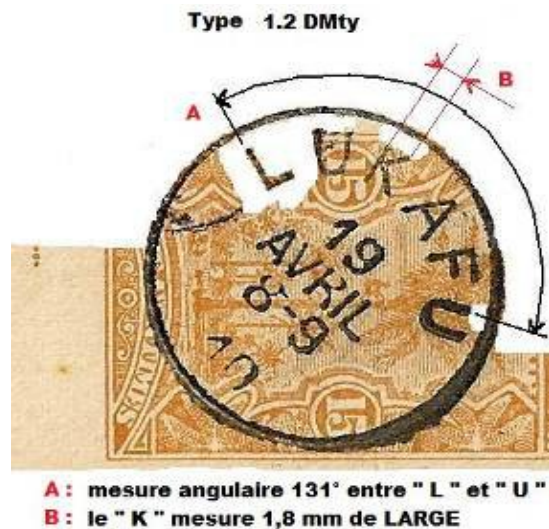


figure 5

A revenue office was opened in Elisabethville on 1 April 1910 – almost 2 years after the Lukafu post office opened on 1 July 1908.

At first, the Elisabethville post office did not have the necessary equipment to frank mail. So that the post office could function, a temporary solution therefore had to be found. As the Lukafu post office had two 23 mm handstamps (1.1 and 1.2), the decision was made to send one handstamp (1.1) to the Elisabethville post office, where it was used until March 1911 (Fig. 6 and 7). The first known cancellation marked "Elisabethville" is dated 15 March 1911.



figure 6



figure 7

As shown by a postcard sent by registered mail (Fig. 8), the post office had no registered mail labels or "Elisabethville" oblong stamp. The registered mail number and word "d'Elisabethville" were added by hand. The oblong stamp, with "RECOMMANDE" written in sans-serif letters, probably also came from another post office.



Figure 8

During its period of use in Elisabethville, stamp LUKAFU 1.1 frequently has the particularity to have blocked hours, i.e. the place where normally appear hours is occupied by a black rectangle (see fig. 3).

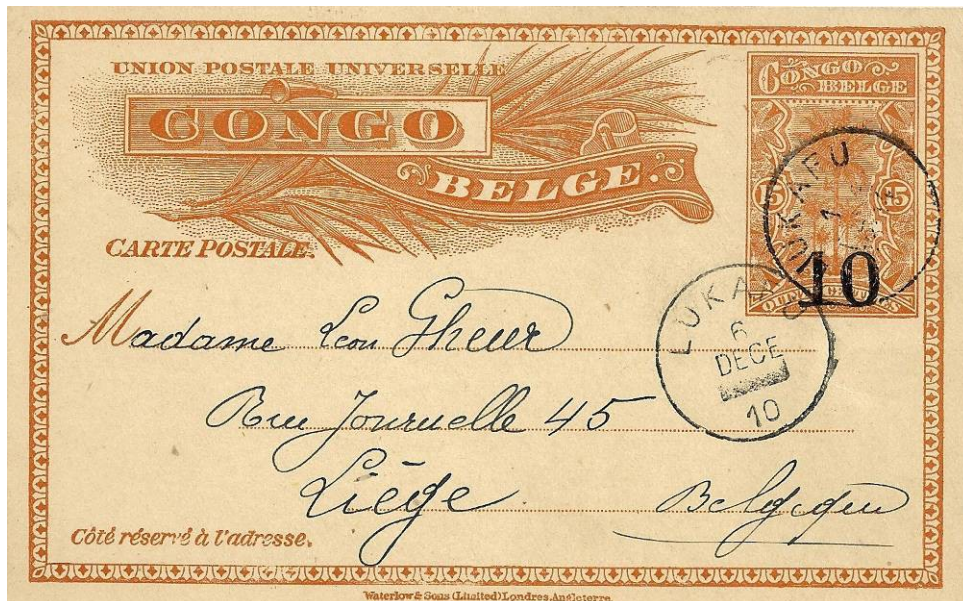


figure 9

Lukafu, 1 décembre 1910

figure 10

From its opening, the perception of Elisabethville served as an Exchange Office for correspondence passing through Cape Town. Therefore, Elisabethville could receive mail from Lukafu or its surroundings bearing a LUKAFU 1.2 postmark applied at Lukafu, and then add a LUKAFU 1.1 mark as a transit hand-stamp. I.e. Both types appear on the same piece (Figs. 9 and 10). The time between the 2 cancellations is generally between 4 and 7 days.

BCSC POSTAL AUCTION SALE 2013-2

REALISED PRICES

LOT	PRICE	LOT	PRICE	LOT	PRICE	LOT	PRICE
1	0,00	55	7,00	109	0,00	163	0,00
2	0,00	56	0,00	110	0,00	164	6,50
3	5,00	57	0,00	111	0,00	165	4,00
4	7,50	58	0,00	112	0,00		
5	5,50	59	3,00	113	5,00		
6	0,00	60	8,50	114	0,00		
7	0,00	61	5,00	115	0,00		
8	0,00	62	4,50	116	0,00		
9	3,00	63	5,00	117	0,00		
10	0,00	64	2,00	118	0,00		
11	0,00	65	4,25	119	0,00		
12	0,00	66	3,50	120	0,00		
13	0,00	67	3,00	121	8,00		
14	0,00	68	39,00	122	0,00		
15	0,00	69	3,00	123	4,00		
16	0,00	70	2,50	124	5,50		
17	0,00	71	2,00	125	0,00		
18	0,00	72	10,50	126	1,00		
19	0,00	73	0,00	127	0,00		
20	6,00	74	5,50	128	0,00		
21	0,00	75	5,50	129	4,00		
22	0,00	76	9,50	130	7,50		
23	0,00	77	26,00	131	0,00		
24	9,00	78	0,00	132	4,00		
25	0,00	79	5,50	133	0,00		
26	7,00	80	6,50	134	0,00		
27	0,00	81	7,00	135	0,00		
28	11,00	82	0,00	136	15,00		
29	17,00	83	6,00	137	0,00		
30	5,50	84	8,50	138	0,00		
31	12,00	85	0,00	139	0,00		
32	0,00	86	7,00	140	0,00		
33	0,00	87	6,00	141	2,50		
34	0,00	88	6,00	142	0,00		
35	0,00	89	7,50	143	0,00		
36	0,00	90	8,00	144	0,00		
37	5,50	91	8,50	145	5,50		
38	10,00	92	8,00	146	14,00		
39	41,00	93	0,00	147	21,00		
40	20,00	94	10,00	148	0,00		
41	2,50	95	25,00	149	0,00		
42	21,50	96	0,00	150	14,00		
43	32,00	97	29,00	151	0,00		
44	0,00	98	32,00	152	0,00		
45	28,00	99	21,00	153	0,00		
46	13,00	100	15,00	154	2,50		
47	19,00	101	0,00	155	0,00		
48	22,00	102	4,75	156	0,00		
49	9,00	103	2,50	157	0,00		
50	9,00	104	0,00	158	0,00		
51	13,00	105	0,00	159	0,00		
52	17,00	106	0,00	160	0,00		
53	10,00	107	0,00	161	2,25		
54	10,00	108	4,50	162	74,00		

